

TELESCOPING JIB LIFT

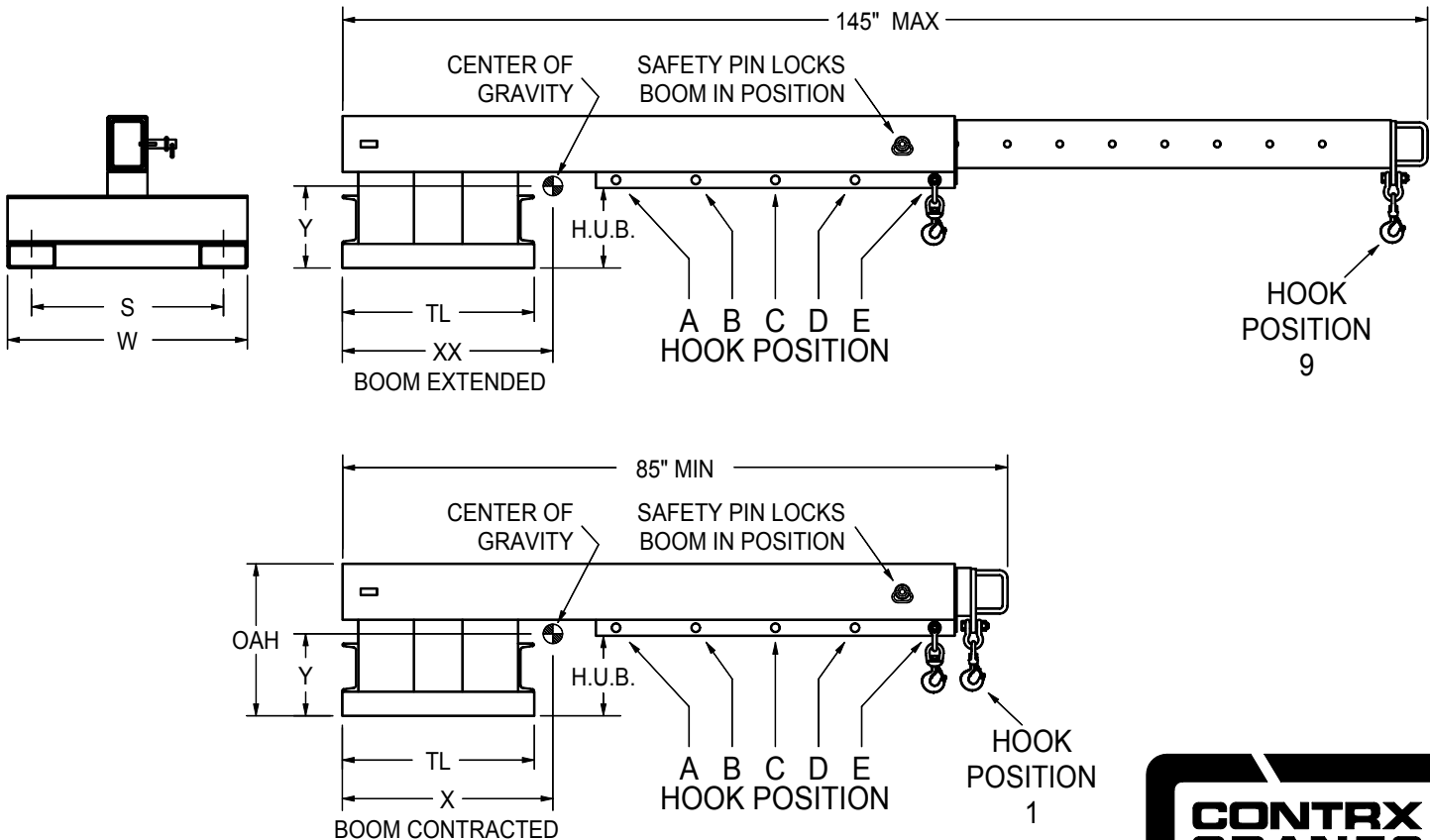
CENTER OF GRAVITY LOCATION

SINGLE HOOK CAPACITIES				
Hook Pos.	Hook Position (inches)	4000 LB. CAP.	6000 LB. CAP.	8000 LB. CAP.
A	34	4000	6000	8000
B	44	4000	6000	8000
C	54	4000	6000	8000
D	64	4000	6000	8000
E	74	4000	6000	8000
1	80	4000	6000	8000
2	87-1/2	3535	5302	6974
3	95	3167	4750	6182
4	102-1/2	2868	4302	5551
5	110	2621	3931	5037
6	117-1/2	2413	3619	4610
7	125	2235	3353	4250
8	132-1/2	2082	3123	3942
9	140	1949	2923	3676

CAP. (LBS)	MODEL NUMBER	DIM. "S"	DIM. "W"	DIM. "TL"	DIM. "H.U.B."	DIM. "OAH"	FORK POCKETS	WT. (LBS)	DIM. "XX"	DIM. "X"	DIM. "Y"
4000	JLT411	11"	17"	24"	10"	19"	2-1/2" X 5-1/2"	373	49.7"	32.3"	11.4"
4000	JLT424	24"	30"	24"	10"	19"	2-1/2" X 5-1/2"	413	46.0"	30.3"	10.6"
4000	JLT430	30"	36"	24"	10"	19"	2-1/2" X 5-1/2"	434	44.4"	29.4"	10.3"
4000	JLT436	36"	42"	24"	10"	19"	2-1/2" X 5-1/2"	455	42.9"	28.6"	10.0"
4000	JLT442	42"	48"	24"	10"	19"	2-1/2" X 5-1/2"	476	41.5"	27.9"	9.7"
6000	JLT613	13"	21"	24"	10"	19"	3-1/2" X 7-1/2"	519	49.8"	32.2"	11.7"
6000	JLT624	24"	32"	24"	10"	19"	3-1/2" X 7-1/2"	544	48.1"	31.3"	11.4"
6000	JLT630	30"	38"	24"	10"	19"	3-1/2" X 7-1/2"	566	46.7"	30.5"	11.2"
6000	JLT636	36"	44"	24"	10"	19"	3-1/2" X 7-1/2"	588	45.4"	29.8"	11.0"
6000	JLT642	42"	50"	24"	10"	19"	3-1/2" X 7-1/2"	610	44.2"	29.2"	10.8"
8000	JLT824	24"	32"	32"	10"	20"	3-1/2" X 7-1/2"	667	50.8"	33.4"	11.7"
8000	JLT836	36"	44"	32"	10"	20"	3-1/2" X 7-1/2"	787	45.5"	30.7"	10.4"
8000	JLT848	48"	56"	32"	12"	22"	3-1/2" X 7-1/2"	909	41.5"	28.7"	10.9"

THIS CHART LISTS SAFE WORKING LOADS FOR THE JIB LIFT ONLY. IT DOES NOT CONSIDER THE FORK TRUCK BEING USED. CONSULT THE FORK TRUCK MANUFACTURER FOR SAFE LOAD CAPABILITIES WITH THIS ATTACHMENT BEFORE USING.

IMPORTANT
TRUCK FORKS MUST EXTEND THROUGH FULL LENGTH OF FORK TUBES



FEATURES

- Handles long loads in closed trucks
- High and long reaches for inaccessible areas
- High underclearances and bulky load handling



1377 Kimberly Drive
Neenah, WI 54956-1642
Phone (920) 722-0101
Fax (920) 725-1394
www.contrx.com